



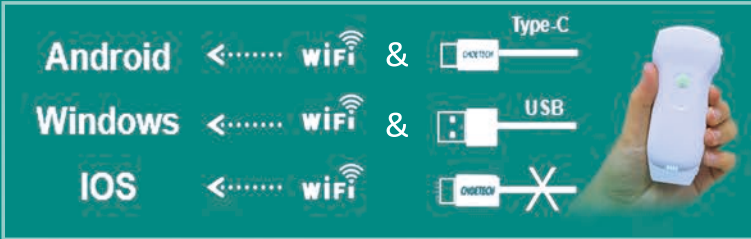
Handheld USB + WiFi Ultrasound

- Double Head
 - Convex
 - Linear
 - Phased
 - 3 in 1
 - Color Doppler
- C10



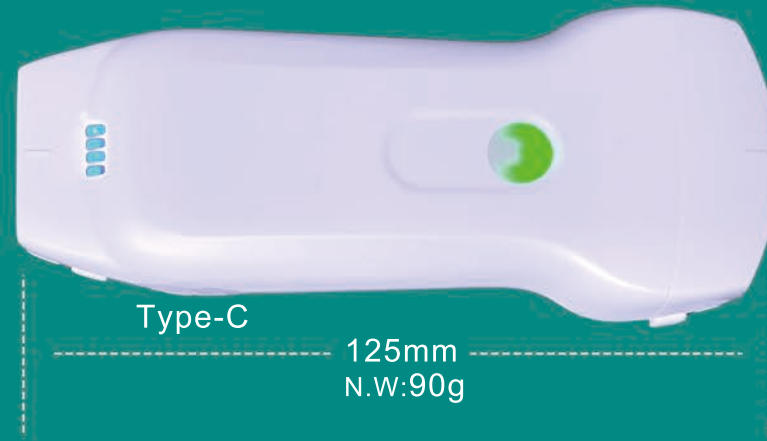
USB&Wi-Fi 3 in 1 probe

can be connected to a Windows/Android/IOS device
(Tablet, smart phone, PC etc) via WiFi or USB cable.



Freq:
7.5/10MHz
Depth:
20-100mm
Footprint:
L25

Linear



Convex + Cardiac

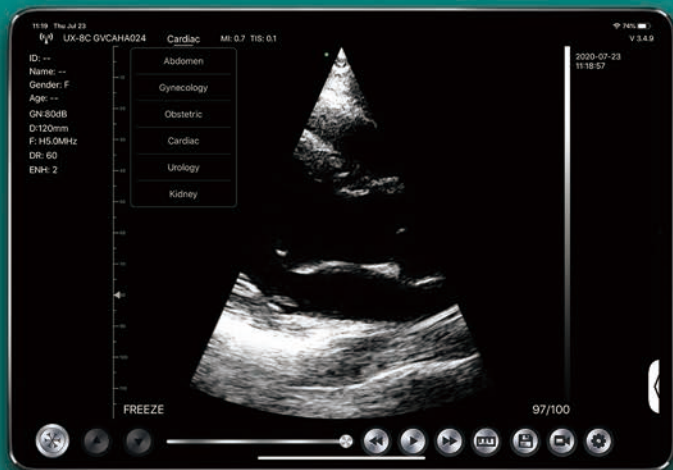
Freq:
2.5/5MHz
3.5/5MHz
Depth:
90-160mm
90-305mm
Radius:
R45



You can scan anybody anytime anywhere conveniently, such as a clinic, hospital ward, emergency room, or operating theater.

Application: Abdomen, Obstetrics / Gynecology, Cardiac, Kidney, Urology, Breast, Thyroid, MSK, Vascular, Pediatrics, Carotid

Download our ultrasound software
from App Store / Google Play



Probe built-in WiFi signal

Lithium Battery
2800mAh

Working time: $\geq 3h$
Standby time: $\geq 12h$

Modes: B, B+M,
Color Doppler, PW,
Power Doppler

Support working while charging

Software Controls

✓ Support report edit and print

✓ Chinese, English, Russian, Italian, Spanish, Portuguese (Brazil)

GN (gain), D (depth), ENH (enhancement), DR (dynamic range)

F (frequency), FocusPos, PRF, WF, Mode, 8TGC, Biopsy, Annote,

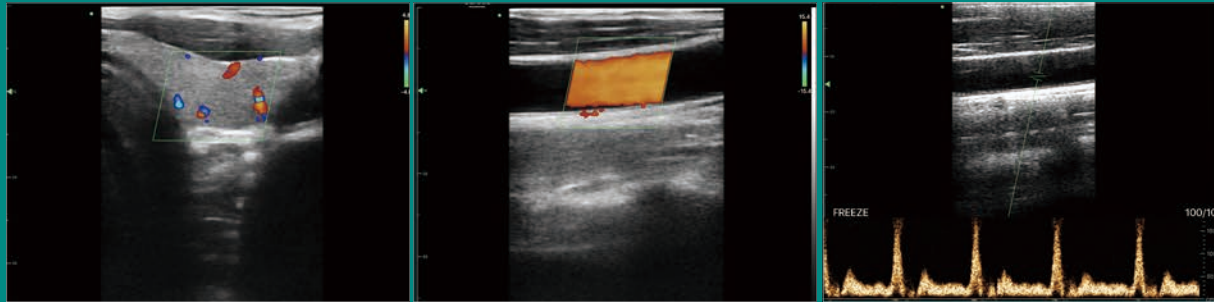
Page left/right up/down

Measurement

Length, Area/Circumference, Angle, Trace, Distance GA (CRL, BPD, GS, FL, HC, AC)

EFW (BPD, FL), Heart Rate, Time, Distance, Velocity, Heart Rate (2), S/D, Depth

Clinical images



Thyroid C Mode

Carotid C Mode

Vascular PW Mode



Liver B Mode

Cardiac C Mode

Kidney C Mode



Anybody

Anywhere

Anytime

BEIJING KONTED MEDICAL TECHNOLOGY CO.,LTD

Tel:8610-60219113

Fax:8610-60219213

Email :info@konted.cn

Website:www.konted.cn

Facebook: Beijing Konted

Youtube: Medical Konted

Address: Room 111,1F, Building 3, No.

27 Yongwang Road,Daxing District,Beijing 102629,China.